

5

KIEFER LANDFILL

12701 Kiefer Boulevard, Sloughhouse

Tuesday – Saturday 916-875-5555
8:30 a.m. – 4 p.m. sacgreenteam.com

Appointments for businesses, non-profits, commercial haulers, etc., are not available at the Kiefer Landfill.

ACCEPTABLE ITEMS AT: 5

- ✓ Antifreeze
- ✓ Brake/transmission fluid
- ✓ Car batteries
- ✓ Cooking oil
- ✓ Fluorescent tubes and bulbs
- ✓ Home-generated needles and syringes (in sealed hard plastic or metal containers)
- ✓ Household batteries
- ✓ Mercury thermometers and switches
- ✓ Motor oil and filters
- ✓ Paint (oil-based or latex)
- ✓ Propane tanks (barbecue style, limit two, maximum 7 gallons)
- ✓ Small aerosol cans

UNACCEPTABLE ITEMS AT: 5

- ⊘ Acids
- ⊘ Ammunition
- ⊘ Asbestos
- ⊘ Compressed industrial gas
- ⊘ Controlled substances
- ⊘ Explosives
- ⊘ Gasoline and other flammables
- ⊘ Household cleaners
- ⊘ Medical waste
- ⊘ Paint thinners
- ⊘ Pesticides and herbicides
- ⊘ Polychlorinated biphenyl (PCB), a banned chemical compound previously used in coolants and plasticizers
- ⊘ Pool chemicals and poisons
- ⊘ Radioactive materials
- ⊘ Railroad ties or treated wood
- ⊘ Solvents

KEEP HOUSEHOLD HAZARDOUS WASTE OUT OF THE TRASH!

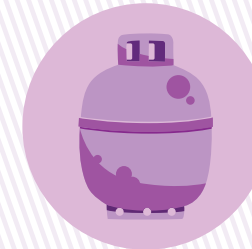
Procedures for packaging and transporting items to a HHW drop-off:

- ✓ Keep products in their original containers, if possible. Label materials that are not in their original containers.
- ✓ **NOTE: Do not put motor oil in any container that was used for bleach, acid, or flammable liquid.**
- ✓ Do not mix products or allow products to accidentally mix and make sure lids are tightly sealed.
- ✓ Place leaking containers in a larger, plastic container with a tight-fitting lid.
- ✓ Put all products upright in a cardboard box so they do not tip over in transport.
- ✓ Transport products in the back of a pickup truck or in a car trunk. Ensure adequate ventilation if transported inside a passenger vehicle.
- ✓ Keep flammables out of direct sunlight and away from sources of heat, spark, flame, or ignition. Do not smoke near products.
- ✓ Remain in your vehicle upon arrival at the facility, prepare to show your driver's license, and allow staff to off-load your waste.



HOUSEHOLD HAZARDOUS WASTE (HHW)

Your Guide to Local Drop-Off Locations



DON'T PUT HHW IN THE TRASH!

Take it to a convenient drop-off location near you. It's easy and FREE!

ACCEPTABLE ITEMS AT: 1 2 3 4

- ✓ Acids
- ✓ Antifreeze
- ✓ Brake/transmission fluid
- ✓ Car batteries
- ✓ Cooking oil
- ✓ Fluorescent tubes and bulbs
- ✓ Gasoline and other flammables
- ✓ Home-generated needles and syringes (in sealed hard plastic or metal containers)
- ✓ Household batteries
- ✓ Household cleaners
- ✓ Medications (non-controlled substances), not accepted at 3
- ✓ Mercury thermometers and switches
- ✓ Motor oil and filters
- ✓ Paint (oil-based or latex) and paint thinners
- ✓ Pesticides and herbicides
- ✓ Pool chemicals and poisons
- ✓ Propane tanks (barbecue style, limit two, maximum 5-7* gallons)
- ✓ Small aerosol cans
- ✓ Solvents

* 5 gallon maximum accepted at Special Waste Collection Center.
7 gallon maximum at all other locations.

UNACCEPTABLE ITEMS AT: 1 2 3 4

- ⊘ Ammunition
- ⊘ Asbestos
- ⊘ Compressed industrial gas
- ⊘ Controlled substances
- ⊘ Explosives (road flares are acceptable)
- ⊘ Medical waste
- ⊘ Polychlorinated biphenyl (PCB), a banned chemical compound previously used in coolants and plasticizers
- ⊘ Radioactive materials
- ⊘ Railroad ties or treated wood



Please check with the drop-off location before you go to make sure it accepts HHW from residents in your city. Locations may be closed on holidays.

All locations: Each customer can bring up to 15 gallons of liquid or 125 pounds of solid material PER VISIT (once per month). Individual containers are limited to a 5 gallon capacity.

1 NORTH AREA RECOVERY STATION HHW FACILITY (NARS HHW) 4450 Roseville Rd., North Highlands

Tuesday, Thursday, Friday, Saturday
8:30 a.m. – 4 p.m. 916-875-5555
sacgreenteam.com

Businesses, non-profits, commercial haulers, etc., must call 916-875-5555 to make an appointment, and are subject to facility fees.

2 SPECIAL WASTE COLLECTION CENTER (SWCC) 9255 Disposal Lane, Elk Grove

Sunday – Wednesday (916) 478-2228
9 a.m. – 4 p.m. elkgrovecity.org/recycle

Businesses, non-profits, commercial haulers, etc., must call (916) 478-2228 or visit elkgrovecity.org/hwbusiness to make an appointment, and are subject to facility fees.

3 SACRAMENTO RECYCLING AND TRANSFER STATION HHW FACILITY (SRTS HHW) 8491 Fruitridge Rd., Sacramento

Tuesday – Saturday 916-737-4870 or call 311
8 a.m. – 5 p.m. sacrecycle.org

Businesses, non-profits, commercial haulers, etc., must call 916-737-4870 to make an appointment, and are subject to facility fees.

4 WESTERN PLAGER WASTE MANAGEMENT AUTHORITY HHW FACILITY 3195 Athens Avenue, Lincoln

Monday – Sunday 916-543-3960
8 a.m. – 5 p.m. wpwma.ca.gov

Businesses, non-profits, commercial haulers, etc., are subject to facility fees, but do not need an appointment. Visit wpwma.ca.gov for fee information.

